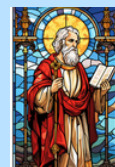




# ST. PETER'S C OF E ACADEMY

## WEEKLY NEWSLETTER



### MESSAGE FROM MR TOMLINSON

### SYNC WITH OUR SCHOOL DIARY!

<https://www.eastbridgfordstpeters.co.uk/diary/grid/2024/09/>

### SCHOOL INFO.

newsletter@st-peters.notts.sch.uk  
01949 20226  
<http://www.eastbridgfordstpeters.co.uk/>  
@StPetersEB

Congratulations to our Girls' table-tennis team

Our girls team competed this week in the Notts Table-tennis Championships and ran out Winners!

We would like to say a huge thank you to the children's parents for ensuring this event went ahead.



### Attendance – holidays in term time/penalty notices

Back in August 2024 the DfE introduced statutory regulations around attendance for all schools, nationally. Last Month our Trust, Aspire, emailed out this information to parents regarding sickness absence and holidays in term time and is reflected through our Trust Attendance Policy. See link to the letter emailed out.

<https://www.eastbridgfordstpeters.co.uk/attendance-late-absence-procedures/>

Holidays in term time will not be authorised (and a penalty notice will be issued when a number of sessions/days is reached), unless there are exceptional circumstances eg armed forces time off, bereavement. The Local Authority's Code of Conduct states: "It is unlikely to amount to an exceptional circumstance if it is merely claimed that: a holiday abroad can only be afforded in term time or that a parent is unable to take leave during school holidays. (This is a matter between the parent and their employer)."

All fines are collected by Notts Local Authority NOT the school. The school does not receive any of this money. Attendance at All schools is under the watchful eye of the Government, week by week.



O Lord  
Bless our school  
Help us to take care of  
ourselves  
Each other, the world  
and with our work.  
Amen.



In the last academic year, at St Peter's, we had close to 30 children with less than 90% attendance in school, the vast majority being holidays in term time. In comparison, less than 20 children received 100% attendance certificate last academic year.

We thank you for your support in ensuring that attendance in school is a priority. Every day matters, all 190 school days.

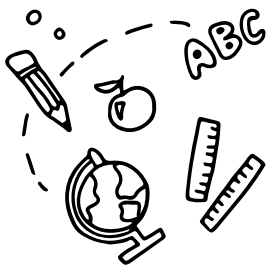
Thank you for your continued support. We value your trust in us. Don't let issues grow. Stay safe. Stay connected. Take Care. Mr Tomlinson. Head Teacher

Take Care



# BEECH CLASS

Working with micro bits and  
our finished Taotie clay  
designs.







# MAPLE CLASS

Maple class spent a fun afternoon investigating which foods contained the most fat. The whole class were surprised to find out how much fat was in crisps and will only eat dry cream crackers from now on.... 🤔

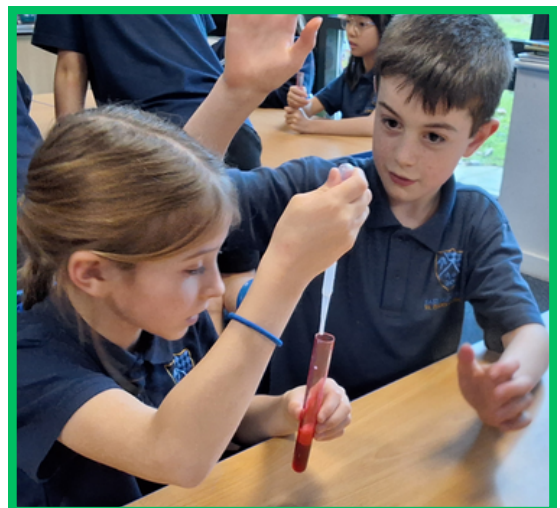
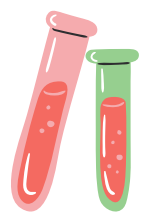
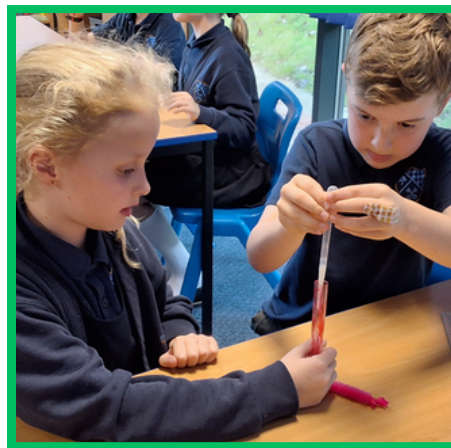
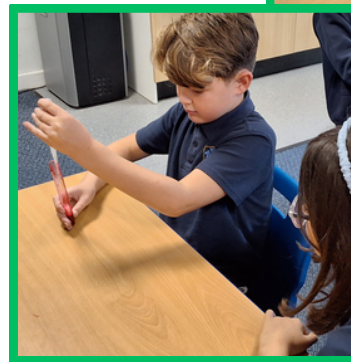
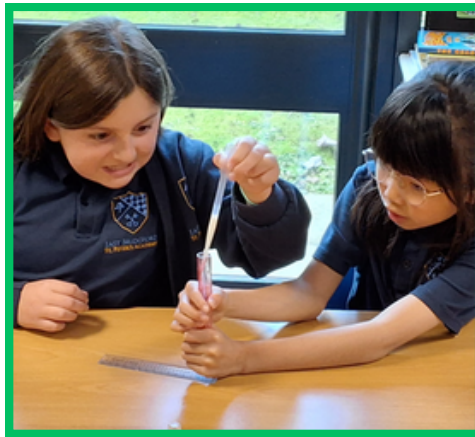
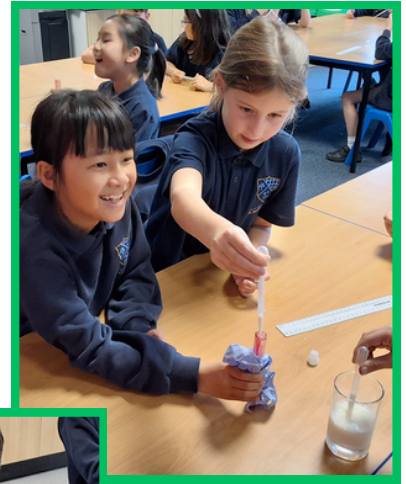






# CEDAR CLASS

In Science, Cedar class have been learning about the circulatory system. The class created a representative blood sample to show the different components of blood - red blood cells, white blood cells, platelets and plasma. No children were harmed in the making of this blood!

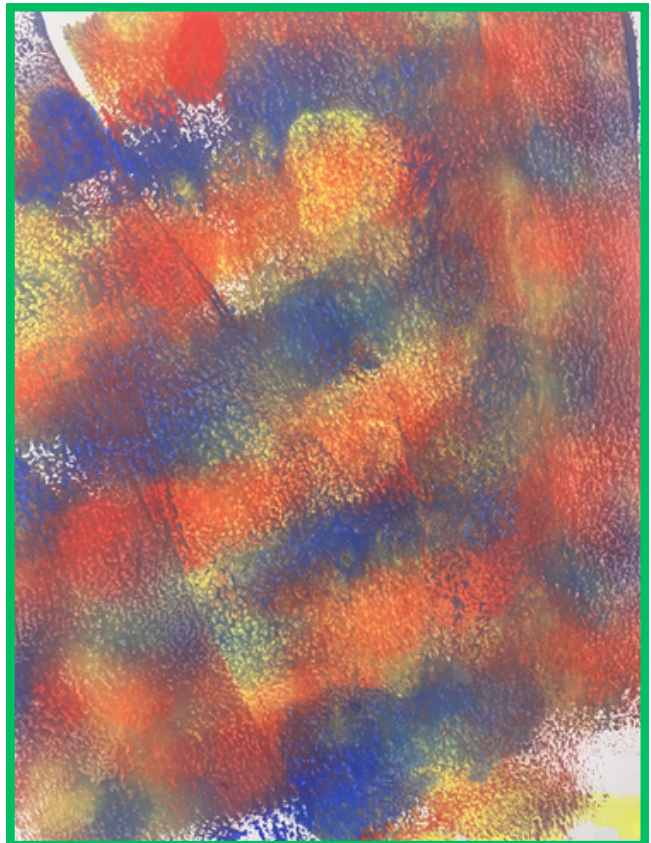
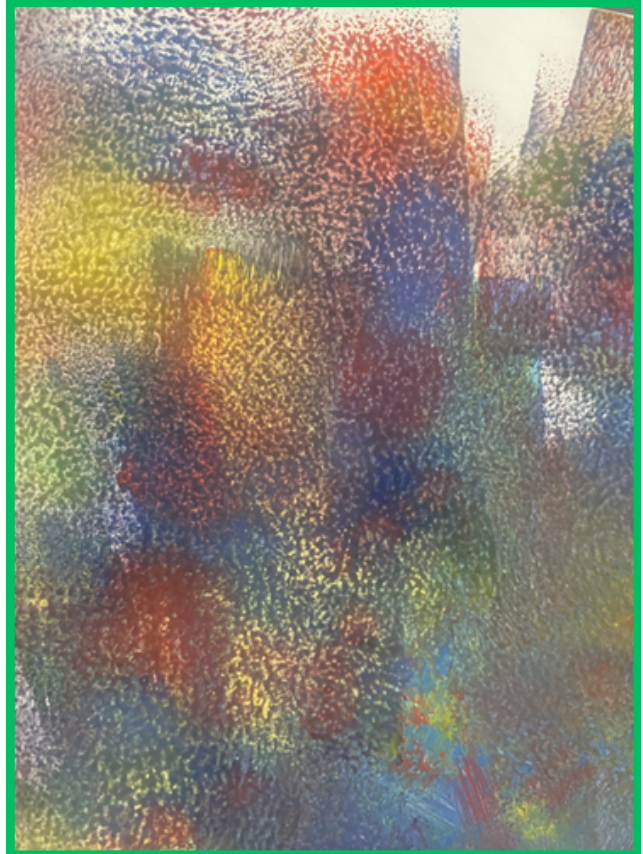
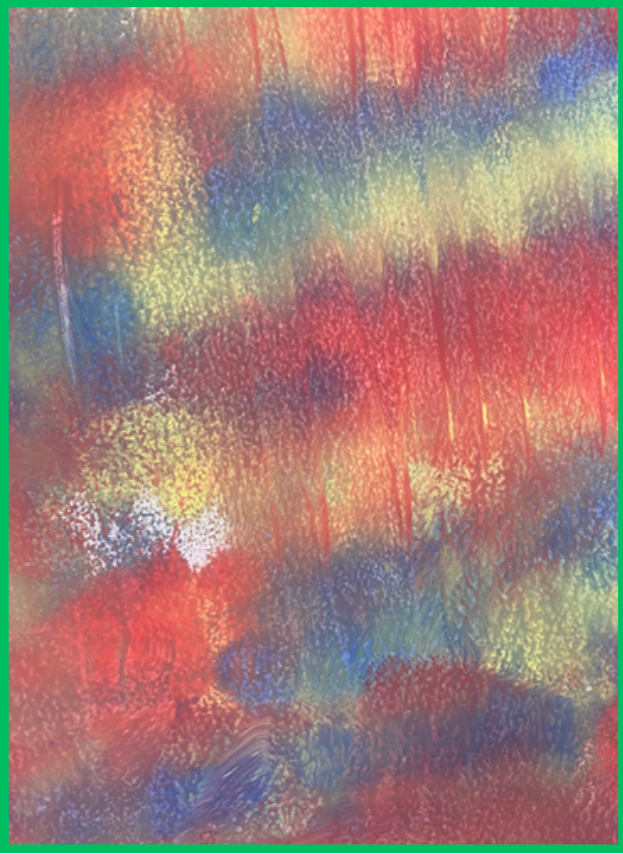






# WILLOW CLASS

Willow class (year 1 and 2) have been exploring colour mixing. The children squeezed blobs of primary colours onto the page and then used a roller to mix them. How many secondary colours can you now spot?







# OUT OF SCHOOL ACHIEVEMENTS

✉ newsletter@st-peters.notts.sch.uk



We  
Won!



## TABLE TENNIS



## CRICKET

We are really proud of Jacob for winning Player of the Season at cricket! Well done Jacob!



## SWIMMING

Well done to Maple for progressing to Level 3 in her swimming class! We're all so proud of her.



## SWIMMING

Well done Franklin for completing stage 3 of swimming lessons! He has worked so hard and we're thrilled for him. Keep up the good work buddy!





## FOOTBALL

It was a great football weekend in the Richards household! Ben got MoM for his sat team for playing amazing and Samuel got MoM on Sunday for maintaining a clean sheet in goal! Well done boys - we are so proud of you both.



We just wanted to share that Kristjan has completed his first summer training for the cricket. He's been really enjoying the game. We are very proud of him.

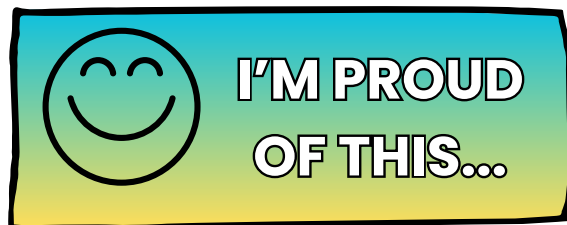


## FOOTBALL

We are so very proud of Marcus who has received a "Man of the Match" trophy two weeks running and scored four goals in a row at last Saturdays game with his Lowdham Colts football team. It's lovely to see how much he enjoys the game. Keep up the good work.



Have you created some wonderful art at home and you would like to share with us?



Is there something you have done that you are proud of?

Please let us know, we would love to hear from you!



[newsletter@st-peters.notts.sch.uk](mailto:newsletter@st-peters.notts.sch.uk)



Well Done



Children in school club were proud of what they had made







Cashpot for schools

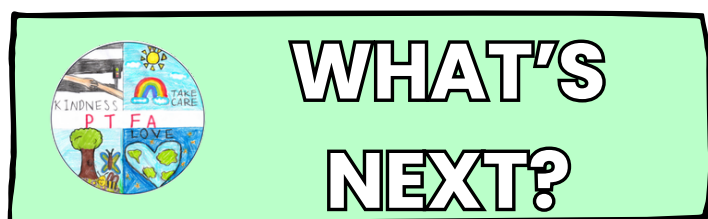
East Bridford St Peters Church of England Academy

You have helped raise

**£115.44**

© 50 days left

See progress



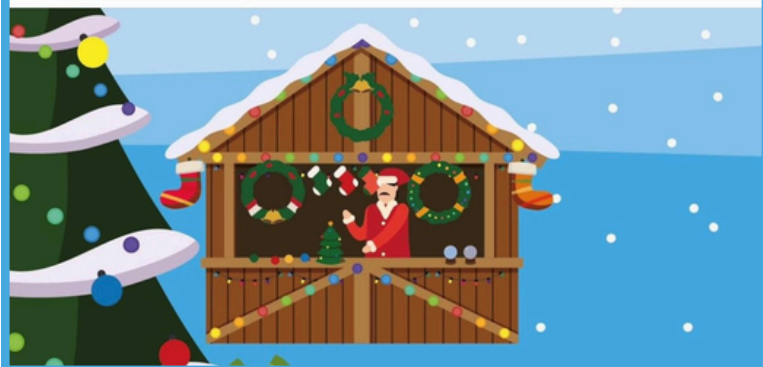
 **DO YOU KNOW SOMEONE WHO WOULD LIKE TO HAVE A STALL AT OUR CHRISTMAS MARKET?**

Calling all local crafters and giftware companies...

East Bridford St Peter's Academy PTFA Christmas Market is on 30th November, 11:30am - 2pm. Spaces still available for stalls to sell their wares.

Also looking for local sponsors to help. Advertising / publicity included.

Please direct message if interested. Thank you



**UNFORTUNATELY BONKERS BINGO HAS HAD TO BE CANCELLED.**







# CALM CLUB





# SIGNPOSTING IN THE LOCAL COMMUNITY.



## PATHWAY TO NOTTINGHAMSHIRE GIRLS & LADIES LEAGUE



## GET INVOLVED

STARTING 4TH NOVEMBER

EVERY MONDAY 6PM-7PM

MUGA LAMBLEY SCHOOL, CATFOOT LANE, LAMBLEY, NG4 4QF

# PLAYERS WANTED

## GIRLS 5-8 YEARS OLD

OPPORTUNITY TO TRAIN WITH FEMALE C LICENCE COACHES TO HELP PLAYERS REACH THEIR POTENTIAL!



## East Bridgford Village Hall

# CINEMA EVENT

Saturday 19th October

Doors open 1.30pm Film starts 2.00pm

£5 per adult **Kids Go Free!**



## BUY TICKETS NOW!

[www.ticketsource.co.uk/east-bridgford-village-hall](http://www.ticketsource.co.uk/east-bridgford-village-hall)

or CASH on the door



Bring your own drinks and nibbles

Running Time 1hr 41 min