

# *East Bridgford St Peter's CE Academy*

## **Welcome Booklet** **Foundation / Reception class** **2025/2026**



Kneeton road, East Bridgford, Nottingham. NG13 8PG

Telephone (01949) 20226

[www.eastbridgfordstpeters.co.uk](http://www.eastbridgfordstpeters.co.uk)

Head Teacher: Mr Richard Tomlinson

Deputy: Mrs Allison Gibbens





## Welcome

We are pleased to welcome you to East Bridgford St Peter's CE Academy and hope that you will find the following information helpful while you and your child are settling in to the new school routine.

St Peter's is an exciting, opportunity purpose driven school. At the heart of St Peter's is the life and spirit we strive for, our core purpose, **Profound Personal Development**. We strive to deliver a vibrant, safe and happy school where children can enjoy and achieve. We want children to learn and grow through discovery and imagination in a broad and varied range of ways. To discover who they can be whilst developing their self-esteem, individuality and ability to confidently live life in all its fullness.

More than anything we want your child to be happy and enjoy school whilst meeting new challenges and opportunities we set before them and ones they discover and create for themselves. Moreover, working in partnership and alongside us to ensure your child does as well as they can.

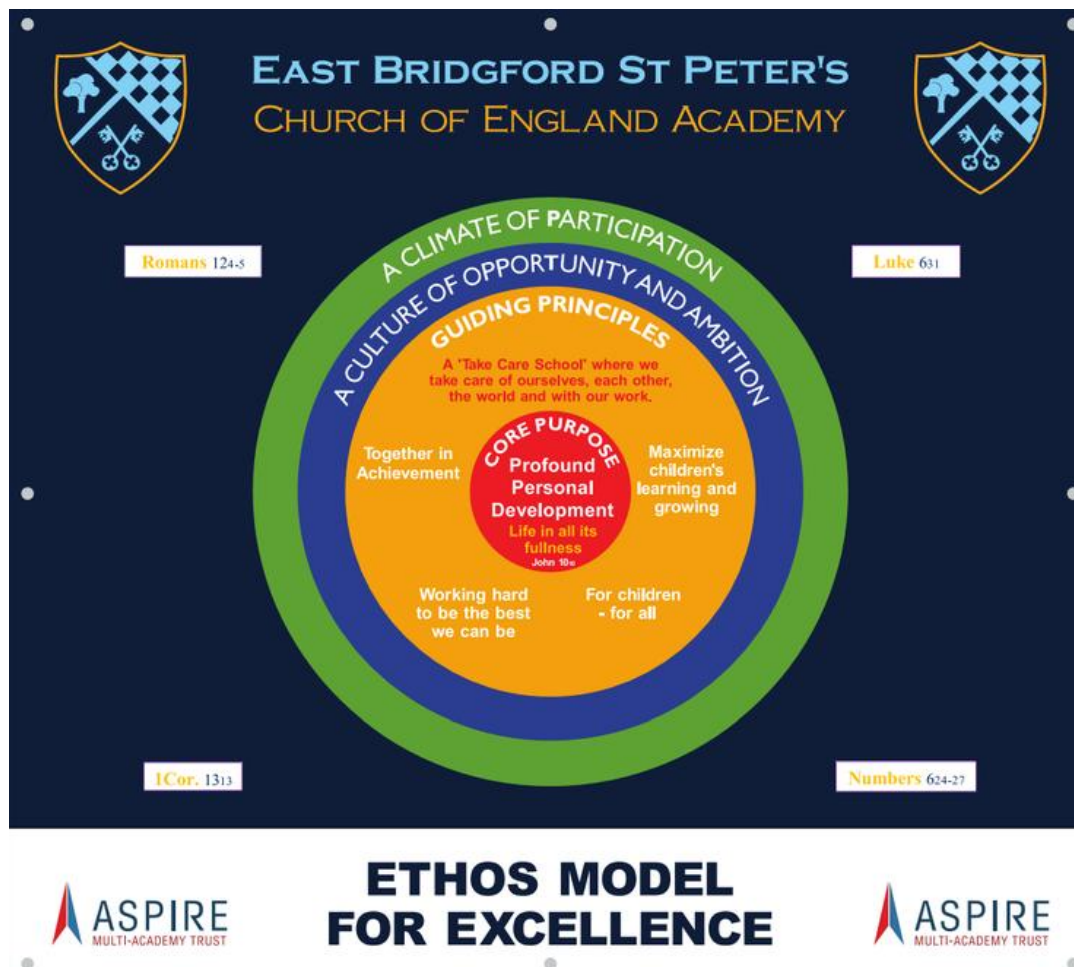
Below are what we believe are the key **values** by which St Peter's operates. More than anything we consider ourselves to be a **Take Care** school and we hope that over time your child will learn what these values mean to them.



We are a church school, whose mission statement is:  
**'We strive to bring life in all its fullness'** John 10:10

### Our Core Purpose:

This is delivered through our ethos model for Excellence and also defines and challenges us all.



### Language and definitions

The **Early Years Foundation Stage** (EYFS) sets standards for the learning, development and care of your child from birth to 5 years old. All schools and Ofsted-registered early years providers must follow the EYFS, including childminders, preschools, nurseries and school reception classes.

**Foundation Stage 1** (F1) takes place in a pre-school / childcare environment such as Nursery between the ages 3 and 4 but is non-compulsory education.

**Foundation Stage 2** (F2) takes place in the **Reception** class of an Infant or Primary school between the ages 4 and 5.

## Safeguarding

Keeping your child safe is our number one priority. Please follow the links below to help keep everyone safe. If you ever feel uncomfortable in regards to child safety and safeguarding please speak to a Designated Safeguarding Lead (DSL) immediately.

<https://www.eastbridfordstpeters.co.uk/safeguarding/>



The poster features logos for ASPIRE Multi-Academy Trust, The Church of England Diocese of Southwell & Nottingham, East Bridford St. Peter's Academy, Nottinghamshire County Council, and Nottinghamshire Safeguarding Children Partnership. Below these is the title 'Designated Safeguarding Leads (DSL)' in large bold letters. Three individuals are shown with their names and roles in red-bordered boxes: Mr R Tomlinson (Head Teacher), Mrs A Gibbens (Deputy Headteacher), and Mrs J Johnson (DSL Governor). At the bottom, there are three green boxes with contact information for Children's Social Care, a central contact section for LADO and Cheryl Stoilery, and an Out of hours Emergency Duty Team. A Click CEOP Internet Safety logo and a URL are also present.

**ASPIRE**  
MULTI-ACADEMY TRUST

**THE CHURCH OF ENGLAND**  
Diocese of Southwell & Nottingham

**EAST BRIDFORD ST. PETER'S ACADEMY**

**Nottinghamshire County Council**

**Nottinghamshire Safeguarding Children Partnership**

### Designated Safeguarding Leads (DSL)

**Mr R Tomlinson**  
Head Teacher

**Mrs A Gibbens**  
Deputy Headteacher

**Mrs J Johnson**  
DSL Governor

**Children's Social Care**  
During Office Hour, Monday to Friday  
Multi Agency Safeguarding Hub (MASH) Tel: - 0300 500 80 90  
If the child is at immediate risk dial 101 and ask for assistance Record all decisions and actions, working to agreed outcomes and within timescales. Escalate any emerging threats/concerns by adopting Nottinghamshire Safeguarding Children Board procedures - [www.nottinghamshire.gov.uk/mash](http://www.nottinghamshire.gov.uk/mash)

**Contacts:** For any allegations/concerns regarding an adult who works with (in either paid/ voluntarily) employment with children contact the LA Designated Officer (LADO) for referrals Tel: - 0115 8041272. LADO Strategic Lead Tel: 0115 9773921  
Cheryl Stoilery - LA Safeguarding Children in Education Officer Tel: - 0115 8041047  
*This flow chart is intended as a brief guide. Please refer to our Child Protection Policy*

**Out of hours Emergency Duty Team**  
6.00pm - 8.30am  
Tel 0300 456 4546

**NSPCC Whistle blowing Tel:**  
0800 028 0285

**CLICK CEOP**  
Internet Safety

<https://www.ceop.police.uk/safety-centre>

Here are some useful links to help keep everyone safe.

<https://www.eastbridfordstpeters.co.uk/useful-links/>

## School times

St. Peter's Preschool (F1) starts at 8.30am and finishes at 3.30pm. Morning sessions run from 8.30am-11.30am with an additional lunch club in the school hall till 12.30pm.

Reception usually starts at 8.35am and finishes at 3.25pm.

<https://www.eastbridfordstpeters.co.uk/useful-information/>

## School Dinners

If your child is attending St Peter's Preschool we operate a lunch club, which can be booked directly with Preschool staff – payment is direct to Preschool on a monthly basis and includes the cost of the school meal at St Peter's Academy.

Menus are sent out each week, on our website and on the display board in the playground.

<https://www.eastbridgfordstpeters.co.uk/school-mealsmenus/>

**Milk** is provided by the Cool Milk scheme and you can get the information needed to apply online from the school office and the school website.

### **Payments**

The majority of payments are payable via **Parentpay** (info from the school office)

<https://www.parentpay.com/> Make sure if paying by cash it is in a named, sealed envelope and is handed over directly to a member of staff.

### **Uniform**

We would firmly request all children wear the accepted uniform with school logo where available.

All uniform is now ordered online where you can see the full range of available uniform. Items can be delivered to your home, school office for collection or you can pick it up directly. If you have difficulty in ordering please ask the office staff for assistance. We have a pre-loved uniform wardrobe where you can take what you need. Pre-loved uniform is often set out in the hall on parents' evenings to help yourself.

<https://www.eastbridgfordstpeters.co.uk/school-uniform/>

For different weather scenarios please provide your child with additional (labelled) warm clothing so they do not get cold. A boot bag for muddy footwear is also very useful. We are a school where we like to go out in just about all weathers. In hot sunny weather we would advise a cap/hat. School logo caps are available but only desirable not essential.

If you have any difficulty affording school uniform, please speak to Mr Tomlinson or let the office staff know in confidence.

### **Jewellery**

We are not keen on jewellery in school from a safety point of view, it getting broken or lost and so with this in mind we ask that children don't wear any. If worn, this is at the child's risk and the school takes no responsibility. Religious items are of course acceptable, we ask you please let us know beforehand.

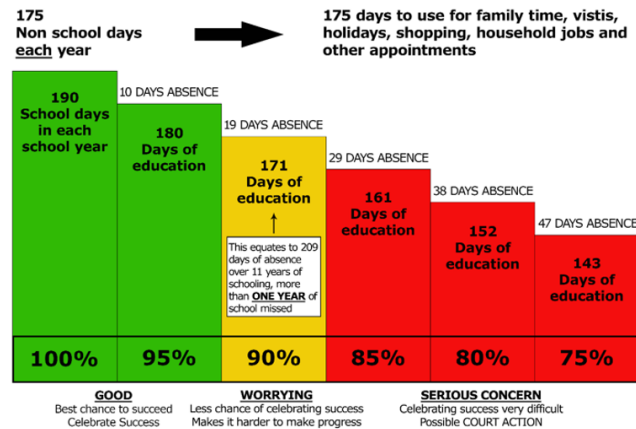
### **Attendance / leave of absence / fining**

If you are planning to take your child/ren out of school during term time please complete a REQUEST FOR WITHDRAWAL FROM SCHOOL-BASED LEARNING FORM.

<https://www.eastbridgfordstpeters.co.uk/attendance/>

Please note that any leave of absence during term time will need to be authorised by the Head Teacher beforehand. The Governors set the target of 97%+ whole school attendance.

## POTENTIAL IMPACT OF ATTENDANCE GRAPH



### Contact forms

Before starting school, we will ask you to complete a number of forms; a contact form with at least **3 contact names** and permission forms.

### Medicine in school

Before starting school, we will ask you to complete a medical form for your child to inform us of any medical information. Please give as much detail as possible and speak directly to your child's class teacher about your child's needs and requirements.

If your child suffers from asthma we ask that a spare one is provided in school and you talk to the class teacher directly. Make sure any inhaler/medicine is labelled with your child's name.

If medicines need to be administered during school time, then you **MUST** complete a parental agreement form giving permission to administer the required medicines.

If you have given your child Calpol/Nurofen before bringing them to school please inform the class teacher directly. Pupils are often susceptible to illness during their first term at school and we recognise that children may require limited time periods off to recuperate. With young children we ask parents/carers to use their judgement as to when their child is suitably fit to return to school. At least 48 hours off before returning to school will prevent any spread of infection or illness.

### Inset days

Each year schools have 5 inset days during term time these are known as Inset days (in service training days). The calendar displaying these dates is on the website. We attempt to remind nearer the time via text. You can sync your smart phone to our school calendar.

<https://www.eastbridfordstpeters.co.uk/diary/grid/2020/06/>



## Parent's weekly diary of events / Newsletters

On Friday we email out a link to our website for a useful guide for forthcoming events. This gives an idea of what is taking place in St Peter's during the week.

<https://www.eastbridfordstpeters.co.uk/stream/newsletters/full/1/-//>

Head Teacher weekly Newsletters are a celebration of school life during that week

<https://www.eastbridfordstpeters.co.uk/headteachers-weekly-newsletters/>

## School structure / classes / Year groups

Preschool (F1) EYFS

Reception (F2) EYFS

Year 1 & 2 are referred to as Key Stage 1 (KS1)

Year 3 & 4 are referred to as Lower Key Stage 2 (LKS2)


Year 5 & 6 are referred to as Upper Key Stage 2 (UKS2)

Class structure may differ from year to year with mixed classes, dependent on pupil numbers.

## Extra-curricular activities

We offer a wide range of activities for all ages. We run some clubs throughout the year and some for a set number of sessions. Certain activities are free but some require a fee. Ask the office for further details. A sheet is provided to book clubs/activities for your child. These are subject to change and new clubs pop up frequently. Below is an example

<https://www.eastbridfordstpeters.co.uk/school-clubs/>




EAST BRIDGFORD

ST. PETER'S ACADEMY

Clubs Available

	Monday	Tuesday	Wednesday	Thursday	Friday
Before School	Table Tennis.	Table Tennis.	Starlight Dance Class	Table Tennis.	Table Tennis.
During Lunchtime	Tennis Y3&4 Chess Y2-6 Book Club Y1-6	Tennis Y5&6 Recorders	Lacrosse Y3-6 Bible Explorers Y1-4	KS1 Choir Football Y3-6 Chill Club Y5-6	Tennis Y1&2. Cross Country Y3 - 6.
After School	Archery Y3-6 Netball Y5/6 girls)	Cross Country Y4-6 Drama Club Y1-6	Environment Club School Band	Table Tennis Y2-6 Handball Y3-6	Hockey Y3 - 6.



## Out of school Club provision

The school club is provided all year round.

<https://www.eastbridfordstpeters.co.uk/out-of-school-club/>

Term time this is run by the School with buy-in from **Rattle N Roll** for activities and planning.

Morning Term time is from 7.30am-8.35am (school starts at 8.35am)

After School Term time is from 3.30pm-6pm. All payments are through Rattle N Roll's payment platform. Holiday time is run solely by Rattle N Roll. <https://www.rattleandrollperformance.com/>

### **Governors – Governing body**

Nationally, all school Governors are volunteers. The Governors at St Peter's are very active and committed to the ethos, high standards and success of the school. Governors recognise their legal, ethical and community responsibilities to the whole school, including the children, staff, parents, church community and all community stakeholders.

<https://www.eastbridfordstpeters.co.uk/governors/>

<http://www.aspire-mat.co.uk/>

### **Parent Teacher Friends Association (PTFA)**

St Peter's PTA is a group of parents and teachers who work together to support the school. It shares the school's commitment to provide the very best opportunities for our children to learn and grow. The PTA raises money to support exciting projects in school and subsidise other essential items for the children. Parents are automatically a member it is up to you to be involved as much as you like. Working together in achievement fulfills an important function in providing social activities both for children and parents/carers. The PTA are always looking for active members with hands on support to run, lead, set-up, clear away. For more information speak to the office or Mr Tomlinson.

<https://www.eastbridfordstpeters.co.uk/ptfa-parent-teachers-friends-association/>

### **Church links**

Christianity is never forced onto children/families. The whole nature, dynamic and caring approach of our school reflects our Christian ethos and our significant relationship and partnership with St Peter's church. We have numerous church services held in church and these times and dates are available from the school office or directly from the church. Throughout the year, we share in family worship and with special assemblies and church services.

Our **Church Foundation governors** are:

Mrs Povey & Mrs Hobbs (from May 2025)

<https://www.eastbridfordstpeters.co.uk/aspire-multi-academy-website/>

### **Community**

We fully recognise the importance of being at the heart of the community, our importance to the village and therefore, our responsibility towards it. As part of our commitment to the local community we support clubs and initiatives, offer successful all year round child care provision alongside a preschool and take part in local events throughout the year. By providing many opportunities for your child to take part we are offering diverse ways for them to strive to have **life in all its fullness**. As they are supported along their S. Peter's journey, we are helping your child grow into confident, well-balanced citizens who understand that they can make a significant contribution to society.

If this information booklet has not answered your questions, please come and speak to Mr Tomlinson or Mrs Gibbens or ask any of our wonderful office staff.

**Welcome to East Bridgford St Peter's CE Academy.**