

# SYCAMORE CLASS



# NEWSLETTER

FRIDAY 28TH  
MARCH

## Weekly summary

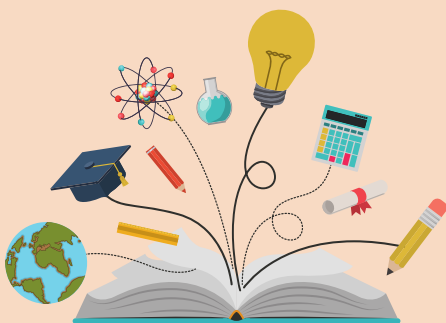
### MESSAGE FROM MISS WALTON

Another week down and another busy week for us.

This week, we have been completing various SATs mocks and trying to cram in lots of writing too! I am amazed with how the children have progressed and how their poetry is coming along. On Monday, we looked at how coffee beans grow and why Peru has the perfect climate and growing conditions. Tuesday saw us making some Mothers Day pledges (I hope that the children stick to these) and we began to create our games using 2DIY3D on Purple Mash. We were treated to a resilience workshop by Notts Mental Health Support Team on Wednesday. We learned lots of useful strategies to help us battle our worries and become strong, independent children.

### THIS WEEK'S LEARNING

Maths - Area & volume  
English - Poetry  
Reading - The 1000 Year Old Boy  
Science - Late adulthood  
PSHE - Changing and growing  
Geography - From coffee bean to cup  
PE - Fitness and skills; Athletics  
Boosters - A range of SPAG, reading and maths skills  
Art - Mothers Day cards  
Computing - Game creation  
RE - Easter Service prep and Rev Ruth surprise-making!



## Rapid Retrieval!

### TELL SOMEONE AT HOME...

1. What are coffee cherries?
2. How do we calculate volume?
3. What is the rule for adding suffixes on the end of these words? *refer, transfer, prefer* (-ed, -al, -ence, -ing)



## Homework

Maths - Measurement

SPAG - Apostrophes; Prepositions

Reading - Music Box



## Upcoming events

- Friday 28th March - PTFA Mothers Day shop
- Friday 4th April - End of term!
- Monday 12th May - Thursday 15th May - KS2 SATs week
- Monday 9th June - Wednesday 11th June - Whitby!

Have a lovely weekend.  
Miss Walton :)