



East Bridgford St Peter's Year 2 Impact Report

July 2025

LET'S GO

ZERO

2030

This report covers:

1. A comparison of your Year 1 and Year 2 Carbon footprints
2. Your completed Year 1 actions
3. Actions to keep/ embed in Y2
4. Some remaining incomplete actions from year 1 to consider
5. New suggested actions to raise ambition in year 2
6. Our ongoing support



What an amazing year...



Culture success: flagship school for Trust, Diocese and beyond! (Case study coming soon!)



Food success: Bronze award winners in the Pro-Veg School Plates Awards



Curriculum or learning success: Curriculum mapped and sustainability integrated throughout!



Biodiversity success: tire garden established and thriving!



Our favourite quote:

“This is just what we do now, It’s normal. It’s part of taking care – of ourselves, each other, and the planet.” Mr R Tomlinson

Your Year 1 Count Your Carbon Score

March 2024 - 344.84 tonnes (note, slight changes due to Count Your Carbon's update last year)

Operational area	Emissions area	t co2e*	% of footprint
Energy & Utilities	Fuel Usage	32	9%
	Electricity Usage	15.8	5%
	Waste Usage	0.1	0%
	Water Usage	0.5	<1%
Transport	Vehicles	0	0%
	School Trips	2.2	<1%
	Student Commutes	87.4	25%
	Staff Commutes	32.5	9%
Food & Drink	Meals	76.4	22%
Purchases	Spending	35.7	10%
	Uniforms	62.2	18%



*'t co2e' or 'co2e' tonnes means 'tonnes of Carbon Dioxide Equivalent'. Under the GHG protocol, 7 greenhouse gases are tracked and summarised as the equivalent amount of Carbon Dioxide that would produce the same warming effect.

Your Year 2 Count Your Carbon Score

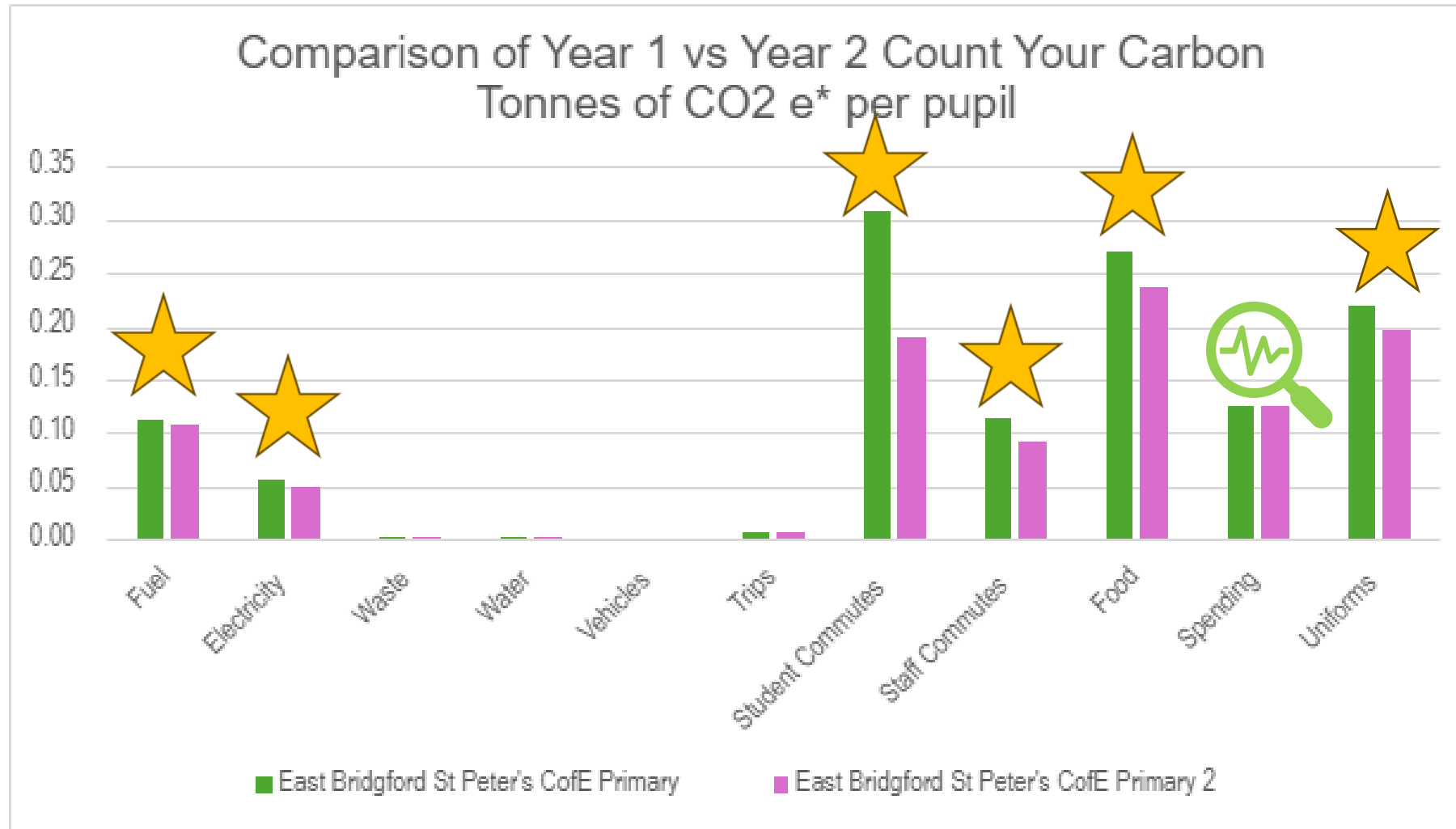
May 2025 - 285.94 tonnes (figure includes 10% uniform reused)

Operational area	Emissions area	t co2e*	% of footprint
Energy & Utilities	Fuel Usage	30.6	10%
	Electricity Usage	14	5%
	Waste Usage	0.1	0%
	Water Usage	0.5	<1%
Transport	Vehicles	0	0%
	School Trips	2.2	<1%
	Student Commutes	53.7	18%
	Staff Commutes	26	9%
Food & Drink	Meals	67	23%
Purchases	Spending	35.7	12%
	Uniforms	62.2	21%



*'t co2e' or 'co2e' tonnes means 'tonnes of Carbon Dioxide Equivalent'. Under the GHG protocol, 7 greenhouse gases are tracked and summarised as the equivalent amount of Carbon Dioxide that would produce the same warming effect.

How your two calculations compare per pupil...



Tonnes of CO2 per year. Data taken from your two Count Your Carbon scores plus an estimated 10% reuse of uniforms. Please note, we used last year's Spending data, please let your advisor know if you would like to recalculate with current figures.



Your savings in one year

As a result of your year 1 Climate Action Plan, as a school you have saved an estimated 58.9 tonnes of CO₂e* This is a 17% reduction from your baseline.*

You have also made significant culture and curriculum changes.

Many congratulations to you and the team for your hard work and dedication!

*Data is based on the Count Your Carbon calculations using your supplied data. Count Your Carbon is brought to you by Keep Britain Tidy and Eco-Schools England in partnership with Let's Go Zero and Arete Zero Carbon, one of the UK's leading Net Zero strategists. It is based on the best-practice model used globally by businesses to track their emissions: the Greenhouse Gas (GHG) Protocol, and has been tailored to educational settings



Your completed Year 1 actions

Plus selected actions we suggest you continue next year

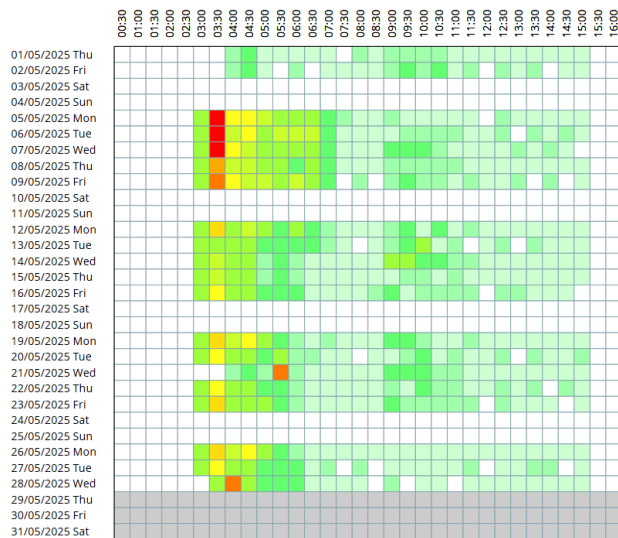


- ✓ Signed up to Let's Go Zero campaign
- ✓ Completed a curriculum audit & incorporate sustainability
- ✓ Provided CPD opportunities for staff on sustainability
- ✓ Completed Count Your Carbon calculation
- ✓ Monitored energy use on a regular basis through platforms such as Systemslink
- ✓ Instructed all staff to follow heating efficiency practices eg turn heating down vs opening windows
- ✓ Took part in a Switch Off campaign (keep on year 2 CAP but continue to focus on making it a part of what you do, not a one off)
- ✓ Completed Count Your Carbon calculation
- ✓ Increased meat-free offer on multiple days or number of meat-free options e.g. sandwiches
- ✓ Arranged a menu consultation through external organisation eg ProVeg
- ✓ Explained reasons for eating less meat during lessons, assemblies etc...
- ✓ Have separate bins for food waste in all areas
- ✓ Offered a vegan / vegetarian option every day
- ✓ Reduced the quantity of meat in meat-based meals
- ✓ Increased biodiversity to support local wildlife
- ✓ Reused your PE Kit through a Uniform Exchange
- ✓ Reused your school uniform through a Uniform Exchange
- ✓ Ran active travel campaigns (keep on year 2 CAP but continue to focus on making it a part of what you do, not a one off)
- ✓ Education around recycling as part of assemblies or other whole school opportunities



Some remaining incomplete actions from year 1 to consider

- Build sheltered areas on playgrounds for heat resilience (Your advisor will seek support from a Climate Ambassador)
- Ensure your BMS/BEMS has efficient timings and temperatures set for the school day (***Your gas boiler is still coming on very early, and remains on over school holidays, so some good improvements to make there. Your advisor will send screenshots for your site manager***)
- Progress your garden plans: Clear garden, new fence, join East Bridgford Open Gardens scheme



New suggested actions to raise ambition in year 2

- Arrange a menu consultation through external organisation with ProVeg – consider the Silver Award next year!
- Set your BMS/BEMS appropriately in the evenings, weekends and school holidays, when the building may be out of use.
- Investigate the potential for solar panels
- Use workspaces efficiently to limit need for heating and lighting during and after the school day (moving wrap around provision to smaller building)
- Conduct a grounds audit using Learning Through Landscapes tool for climate resilience
- Increase biodiversity to support local wildlife e.g. planting pollinator-friendly plants, putting up birdfeeders, bat boxes and 'bug hotels'
- Include a commitment to sustainability in school values statement including declaration of Net Zero aspirations. Your advisor will send A3 certificate for your hall. Plus the press release and photos pack.



Next steps

Next week

We will send over your Year 2 Climate Action Plan and guidance on getting started

6-month checkpoint (set date now)

Check-in on progress and review actions

Full year checkpoint

Redo Count Your Carbon calculation

Year 3

Review actions and add to your year 3 action plan

Contact your Climate Action Advisor anytime with questions or updates of your progress.

Jo.Pettifer@letsgozero.org

